

Holmium laser enucleation therapy

Boston Scientific
Advancing science for life™

Long-lasting symptom relief for **benign prostate enlargement**¹

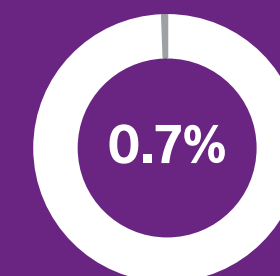
If you're living with **benign prostate enlargement**, also known as enlarged prostate, you know it can disrupt your life – both day and night.²

With holmium laser enucleation therapy it doesn't have to be that way.

Live your life on your terms, away from:²

- Sudden or frequent urge to urinate
- Waking up at night to urinate
- Trouble starting or stopping the urine stream
- Difficulty emptying the bladder
- A weak urine stream

Take control of your health by understanding and addressing your symptoms.



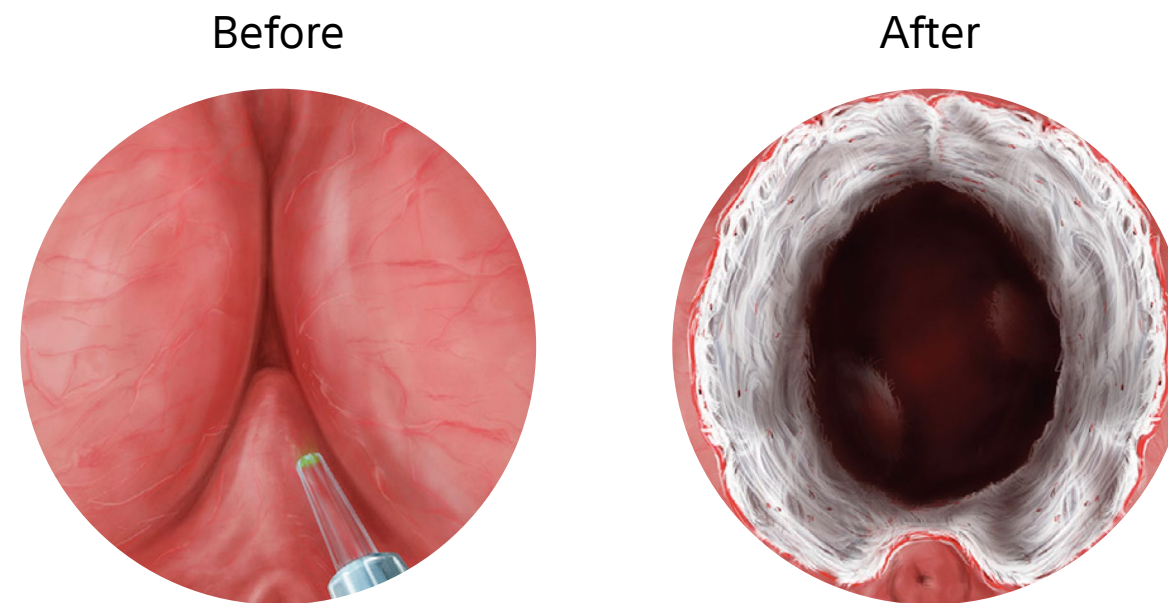
Experience lasting relief with holmium laser enucleation therapy: **0.7% reoperation rate at 10 years!**

Explore what's possible with **holmium laser enucleation therapy.**



Why choose holmium laser enucleation therapy?

Symptoms of an enlarged prostate can include troublesome urinary symptoms. Holmium laser enucleation uses a laser to remove excess prostate tissue, which can improve urine flow without the need for external incisions.³ You may even be able to undergo this procedure as an outpatient, without having to stay overnight in hospital.⁴



Prostate before and after holmium laser enucleation¹⁰

Holmium laser enucleation therapy has demonstrated a high level of patient satisfaction:¹⁰



A proven treatment

Holmium laser enucleation therapy provides lasting relief – with symptom reduction up to 10 years.¹

The European Association of Urology recommends the use of holmium laser enucleation in people with moderate-to-severe lower urinary tract symptoms.⁵

One procedure, lasting results

Benefits at a glance

- Symptom relief: long-lasting improvement in symptoms¹
- Low reoperation rate: can provide lasting results⁶
- Reduced bleeding: compared with other treatment options^{7,8}

Compared with conventional surgical treatments to remove excess prostate tissue, holmium laser enucleation therapy is associated with:

- Reduced intraoperative bleeding⁸
- Shorter hospital stay^{8,9}
- Shorter catheterisation time⁸
- Improved symptom relief^{8,9}



Discover more about holmium laser enucleation

Scan this QR code or visit www.my-prostate-info.co.uk to find answers to frequently asked questions.

References

1. Elmansy HM, Kotb A, Elhilali MM. Holmium laser enucleation of the prostate: Long term durability of clinical outcomes and complication rates during 10 years of follow-up. *J Urol*. 2011; **186**: 1972–76.
2. National Health Service. Prostate problems. 2021. Available at: <https://www.nhs.uk/conditions/prostate-enlargement/> [Accessed 11 June 2024].
3. Mayo Clinic. Holmium laser prostate surgery. 2023. Available at: <https://www.mayoclinic.org/tests-procedures/holmium-laser-prostate-surgery/about/pac-20384871> [Accessed 11 June 2024].
4. Agarwal DK, Large T, Tong Y *et al*. Same day discharge is a successful approach for the majority of patients undergoing holmium laser enucleation of the prostate. *Eur Urol Focus*. 2021; **8**: 228–34.
5. European Association of Urology. Management of non-neurogenic male LUTS. 2023. Available at: <https://uroweb.org/guidelines/management-of-non-neurogenic-male-luts/summary-of-changes> [Accessed 11 June 2024].
6. Elkoushy MA, Elshal AM, Elhilali MM. Reoperation after holmium laser enucleation of the prostate for management of benign prostatic hyperplasia: Assessment of risk factors with time to event analysis. *J Endourol*. 2015; **29**: 797–804.
7. Elshal AM, Mekkawy R, Laymon M *et al*. Holmium laser enucleation of the prostate for treatment for large-sized benign prostate hyperplasia; is it a realistic endourologic alternative in developing country? *World J Urol*. 2016; **34**: 399–405.
8. Li S, Zeng XT, Ruan XL *et al*. Holmium laser enucleation versus transurethral resection in patients with benign prostate hyperplasia: An updated systematic review with meta-analysis and trial sequential analysis. *PLoS One*. 2014; **9**: e101615.
9. Iqbal J, Mashkoo Y, Nadeem A *et al*. Shifting trends in prostate treatment: A systematic review comparing transurethral resection of the prostate and holmium laser enucleation of the prostate. *Cureus*. 2023; **15**: e46173.
10. Capogrosso P, Ventimiglia E, Fallara G *et al*. Holmium laser enucleation of the prostate is associated with complications and sequelae even in the hands of an experienced surgeon following completion of the learning curve. *Eur Urol Focus*. 2023; **9**: 813–21.

Results from case studies are not necessarily predictive of results in other cases. Results in other cases may vary. Individual recovery varies. Experience may not be representative of all cases.

This material is for informational purposes only and not meant for medical diagnosis. This information does not constitute medical or legal advice, and Boston Scientific makes no representation regarding the medical benefits included in this information. Boston Scientific strongly recommends that you consult with your physician on all matters pertaining to your health.

All cited trademarks are the property of their respective owners.

CAUTION: The law restricts these devices to sale by or on the order of a physician. Indications, contraindications, warnings, and instructions for use can be found in the product labelling supplied with each device or at www.IFU-BSCI.com. Products shown for **INFORMATION** purposes only and may not be approved or for sale in certain countries. This material is not intended for use in France.

Publication's license: <https://creativecommons.org/licenses/by/4.0/>

Please check availability with your local sales representative or customer service.

URO-1769603-AA © 2024 Boston Scientific Corporation or its affiliates. All rights reserved.

**Boston
Scientific**
Advancing science for life™

www.bostonscientific.eu

© 2024 Boston Scientific Corporation
or its affiliates. All rights reserved.